



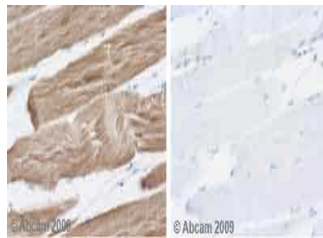
Actin, Muscle specific

USA IVD

This antibody recognizes muscle specific alpha and gamma actin isomers. Actin is a globular structural protein that polymerizes in a helical fashion to form an actin filament. This antibody stains myocardial, skeletal and Smooth muscle cells; also useful in the identification of rhabdoid cellular elements.

Mouse Monoclonal, Clone: HHF35

Control: Skeletal muscle. **Embedded:** Paraffin and frozen tissue. **Storage:** 2-8°C. **Shelf life:** Up to 36 months. **Isotype:** IgG₁/K **Cellular localization:** Cytoplasmic



Skeletal muscle

Catalog no.	0.1 ml concentrated
AMS-2010-1	0.5 ml concentrated
AMS-2010-2	1 ml concentrated
AMS-2010-3	1 ml Prediluted
AMS-2010-4	7 ml Prediluted
AMS-2010-5	5 Positive control slides
AMSA-2010	

