



CD15

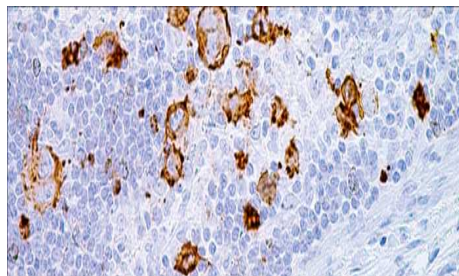
USA IVD

This can be used to distinguish epithelial mesothelioma from adenocarcinoma.

Mouse Monoclonal, Clone: MMA

Control: Hodgkin's Lymphoma. **Embedded:** Paraffin and frozen tissue. **Storage:** 2-8°C.

Shelf life: Up to 36 months. **Isotype:** IgM **Cellular localization:** Cytoplasmic, Membranous.



Hodgkin's Lymphoma

| | |
|--------------------|---------------------------|
| Catalog no. | 0.1 ml concentrated |
| C15-2010-1 | 0.5 ml concentrated |
| C15-2010-2 | 1 ml concentrated |
| C15-2010-3 | 1 ml Prediluted |
| C15-2010-4 | 7 ml Prediluted |
| C15-2010-5 | 5 Positive control slides |
| C15-2010 | |