



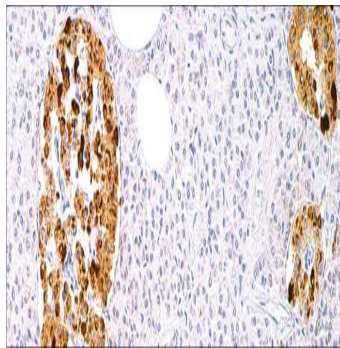
# Chromogranin A

USA IVD

This can help detect paraganglioma and neuroendocrine neoplasms.

**Mouse Monoclonal, Clone: LK2H10**

**Control:** Pancreas. **Embedded:** Paraffin and frozen tissue. **Storage:** 2-8°C. **Shelf life:** Up to 36 months. **Isotype:** IgG<sub>1</sub>/K **Cellular localization:** Cytoplasmic



Pancreas

<b>Catalog no.</b>	0.1 ml concentrated
Ch-2010-1	0.5 ml concentrated
Ch-2010-2	1ml concentrated
Ch-2010-3	1ml Prediluted
Ch-2010-4	7 ml Prediluted
Ch-2010-5	5 Positive control slides
Ch-2010	