



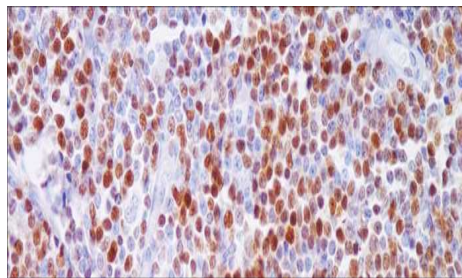
# Cyclin D1

USA IVD

This is useful for separating mantle cell lymphomas from SLL's and small cleaved cell lymphomas.

**Rabbit Monoclonal, Clone: SP4**

**Control:** Mantle Cell Lymphoma. **Embedded:** Paraffin and frozen tissue. **Storage:** 2-8°C.  
**Shelf life:** Up to 36 months. **Isotype:** IgG **Cellular localization:** Nuclear



Mantle Cell Lymphoma

<b>Catalog no.</b>	<b>Volume</b>
Cy-2010-1	0.1 ml concentrated
Cy-2010-2	0.5 ml concentrated
Cy-2010-3	1ml concentrated
Cy-2010-4	1ml Prediluted
Cy-2010-5	7 ml Prediluted
Cy-2010	5 Positive control slides