



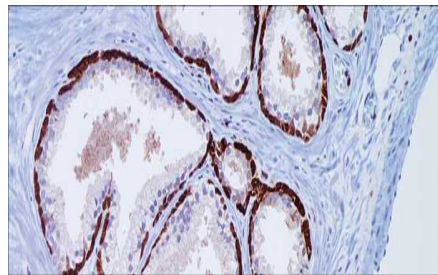
# Cystatin A

USA IV D

This helps in the discrimination of prostate carcinoma versus benign prostate.

**Mouse Monoclonal, Clone: MRQ-30**

**Control:** Prostate. **Embedded:** Paraffin and frozen tissue. **Storage:** 2-8°C. **Shelf life:** Up to 36 months. **Isotype:** IgG<sub>1</sub> **Cellular localization:** Cytoplasmic



Prostate

<b>Catalog no.</b>	0.1 ml concentrated
Cys-2010-1	0.5 ml concentrated
Cys-2010-2	1ml concentrated
Cys-2010-3	1ml Prediluted
Cys-2010-4	7 ml Prediluted
Cys-2010-5	5 Positive control slides
Cys-2010	