



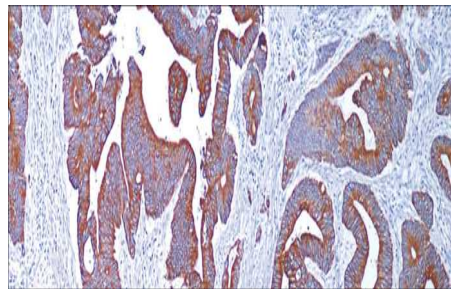
# Cytokeratin 20

USA IVD

This is used to differentiate specific types of simple epithelial cells of the urinary tract as well as normal and malignantly transformed epithelia.

**Mouse Monoclonal, Clone: Ks20.8**

**Control:** Colon Carcinoma. **Embedded:** Paraffin and frozen tissue. **Storage:** 2-8°C. **Shelf life:** Up to 36 months. **Isotype:** IgG<sub>2a</sub>/K **Cellular localization:** Cytoplasmic



Colon Carcinoma

Catalog no.	Volume
Y20-210-1	0.1 ml concentrated
Y20-2010-2	0.5 ml concentrated
Y20-2010-3	1ml concentrated
Y20-2010-4	1ml Prediluted
Y20-2010-5	7 ml Prediluted
Y20-2010	5 Positive control slides