



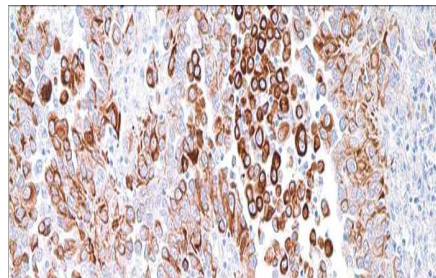
# Cytokeratin 5 & 6

USA IVD

This is useful in recognizing spindle cell squamous cell carcinoma of the skin.

**Mouse Monoclonal, Clone: D5 & 16B4**

**Control:** Mesothelioma. **Embedded:** Paraffin and frozen tissue. **Storage:** 2-8°C. **Shelf life:** Up to 36 months. **Isotype:** IgG<sub>1</sub> **Cellular localization:** Cytoplasmic



Mesothelioma

<b>Catalog no.</b>	0.1 ml concentrated
Cyk-2010-1	0.5 ml concentrated
Cyk-2010-2	1ml concentrated
Cyk-2010-3	1ml Prediluted
Cyk-2010-4	7 ml Prediluted
Cyk-2010-5	5 Positive control slides
Cyk-2010	