



# Cytokeratin 8 & 18

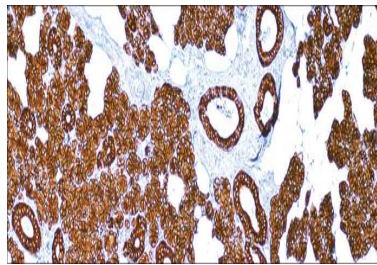
USA IVD

This is used to demonstrate the presence of Paget cells,

**Mouse Monoclonal, Clone: B22.1 & B23.1**

**Control:** Prostate, Salivary Gland. **Embedded:** Paraffin and frozen tissue. **Storage:** 2-8°C.

**Shelf life:** Up to 36 months. **Isotype:** IgG<sub>1</sub> **Cellular localization:** Cytoplasmic



Prostate

<b>Catalog no.</b>	<b>Volume</b>
Cy8-2010-1	0.1 ml concentrated
Cy8-2010-2	0.5 ml concentrated
Cy8-2010-3	1ml concentrated
Cy8-2010-4	1ml Prediluted
Cy8-2010-5	7 ml Prediluted
Cy8-2010	5 Positive control slides