



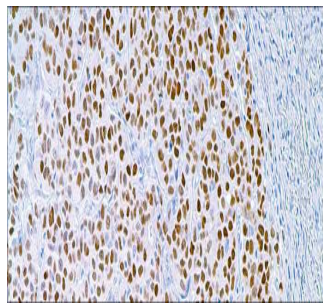
# Estrogen Receptor

USA ASR

This antibody stains nuclei of breast epithelial cells and endometrial epithelia , as well as myometrium.

**Rabbit Monoclonal, Clone: SP1**

**Control:** Breast, Endometrium. **Embedded:** Paraffin and frozen tissue. **Storage:** 2-8°C.  
**Shelf life:** Up to 36 months. **Isotype:** IgG<sub>1</sub>/K **Cellular localization:** Nuclear



Breast, Endometrium

| Catalog no. | Volume                    |
|-------------|---------------------------|
| ER-2010-1   | 0.1 ml concentrated       |
| ER-2010-2   | 0.5 ml concentrated       |
| ER-2010-3   | 1ml concentrated          |
| ER-2010-4   | 1ml Prediluted            |
| ER-2010-5   | 7 ml Prediluted           |
| ER-2010     | 5 Positive control slides |