



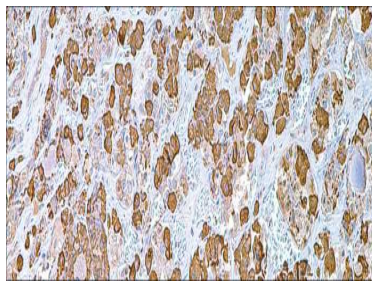
GH

USA IVD

This is a marker in classification of pituitary tumors and the study of pituitary disease.

Rabbit Polyclonal.

Control: Pituitary **Embedded:** Paraffin and frozen tissue. **Storage:** 2-8°C. **Shelf life:** Up to 36 months. **Cellular localization:** Cytoplasmic



Pituitary

Catalog no.	Volume
GH-210-1	0.1 ml concentrated
GH-2010-2	0.5 ml concentrated
GH-2010-3	1ml concentrated
GH-2010-4	1ml Prediluted
GH-2010-5	7 ml Prediluted
GH-2010	5 Positive control slides