



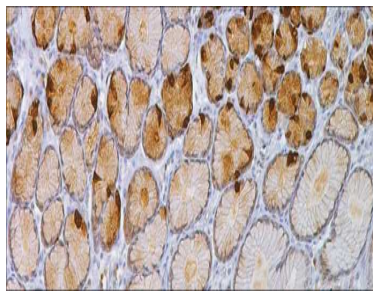
Gastrin

USA IVD

This stains G-cells of human antral/pyloric mucosa and cells producing gastrin or a structural gastrin analog as seen in stomach.

Rabbit Polyclonal

Control: Stomach. **Embedded:** Paraffin and frozen tissue. **Storage:** 2-8⁰C. **Shelf life:** Up to 36 months. **Isotype:** N/A. **Cellular localization:** Cytoplasmic



Stomach

Catalog no.	Volume
GN-2010-1	0.1 ml concentrated
GN-2010-2	0.5 ml concentrated
GN-2010-3	1ml concentrated
GN-2010-4	1ml Prediluted
GN-2010-5	7 ml Prediluted
GN-2010	5 Positive control slides

