



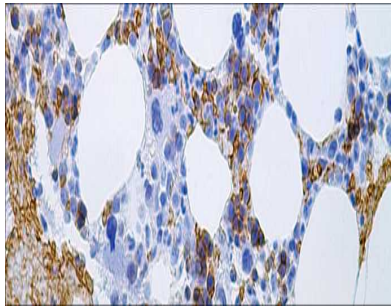
# Glycophorin A

USA IV D

This is used to characterize erythroid cell development and in the diagnosis of erythroid leukemias.

**Mouse Monoclonal: GA-R2 & HIR2**

**Control:** Bone Marrow **Embedded:** Paraffin and frozen tissue. **Storage:** 2-8°C. **Shelf life:** Up to 36 months. **Isotype:** IgG<sub>2b</sub>/K, IgG<sub>2b</sub>/K **Cellular localization:** Membranous



Bone Marrow

Catalog no.	Volume
GY-2010-1	0.1 ml concentrated
GY-2010-2	0.5 ml concentrated
GY-2010-3	1ml concentrated
GY-2010-4	1ml Prediluted
GY-2010-5	7 ml Prediluted
GY-2010	5 Positive control slides