



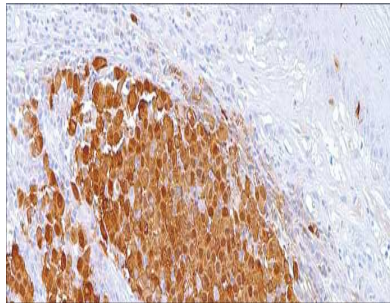
S-100 Protein

USA IVD

This helps with the identification of many neoplasms, including melanomas.

Mouse Monoclonal, Clone: 4C4.9

Control: Melanoma **Embedded:** Paraffin and frozen tissue. **Storage:** 2-8°C. **Shelf life:** Up to 36 months. **Isotype:** IgG_{2a} **Cellular localization:** Cytoplasmic



Melanoma

Catalog no.

SP-2010-1

SP-2010-2

SP-2010-3

SP-2010-4

SP-2010-5

SP-2010

Volume

0.1 ml Concentrated

0.5 ml concentrated

1ml concentrated

1ml Prediluted

7 ml Prediluted

5 Positive control slides