



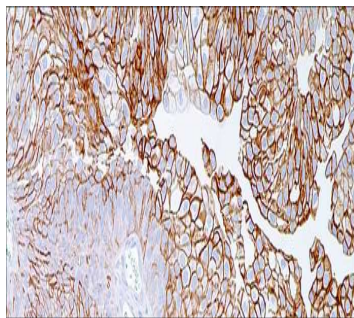
# Thrombomodulin

USA IVD

This is a marker for lymphatic endothelial cells and their tumors.

**Rabbit Polyclonal, Clone: 1009**

**Control:** Bladder **Embedded:** Paraffin and frozen tissue. **Storage:** 2-8°C. **Shelf life:** Up to 36 months. **Isotype:** IgG<sub>1</sub>/K **Cellular localization:** Membranous, Cytoplasmic



Bladder

## Catalog no.

TH-2010-1

TH-2010-2

TH-2010-3

TH-2010-4

TH-2010-5

TH-2010

## Volume

0.1 ml Concentrated

0.5 ml concentrated

1ml concentrated

1ml Prediluted

7 ml Prediluted

5 Positive control slides.