



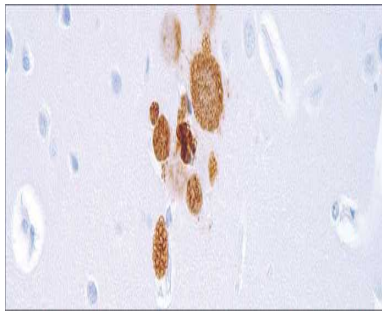
Toxoplasma Gondii

USA ASR

This is a spindle-to-oval shaped protozoan which presents as an infection in humans.

Rabbit Polyclonal

Control: Toxoplasma Gondii Infected Tissue **Embedded:** Paraffin and frozen tissue. **Storage:** 2-8°C. **Shelf life:** Up to 36 months. **Cellular localization:** Cell Wall



Toxoplasma Gondii Infected Tissue

Catalog no.

TO-2010-1

TO-2010-2

TO-2010-3

TO-2010-4

TO-2010-5

TO-2010

Volume

0.1 ml Concentrated

0.5 ml concentrated

1ml concentrated

1ml Prediluted

7 ml Prediluted

5 Positive control slides