



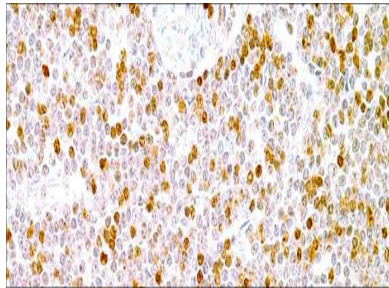
ZAP-70

USA IVD

This distinguishes between the Ig-mutated and Ig-unmutated CLL subtypes.

Mouse Monoclonal, Clone: 2F3.2

Control: Chronic Lymphocytic Leukemia **Embedded:** Paraffin and frozen tissue. **Storage:** 2-8°C. **Shelf life:** Up to 36 months. **Isotype:** IgG_{2a} **Cellular localization:** Cytoplasmic



Chronic Lymphocytic Leukemia

Catalog no.

ZA-2010-1

ZA-2010-2

ZA-2010-3

ZA-2010-4

ZA-2010-5

ZA-2010

Volume

0.1 ml Concentrated

0.5 ml concentrated

1ml concentrated

1ml Prediluted

7 ml Prediluted

5 Positive control slides